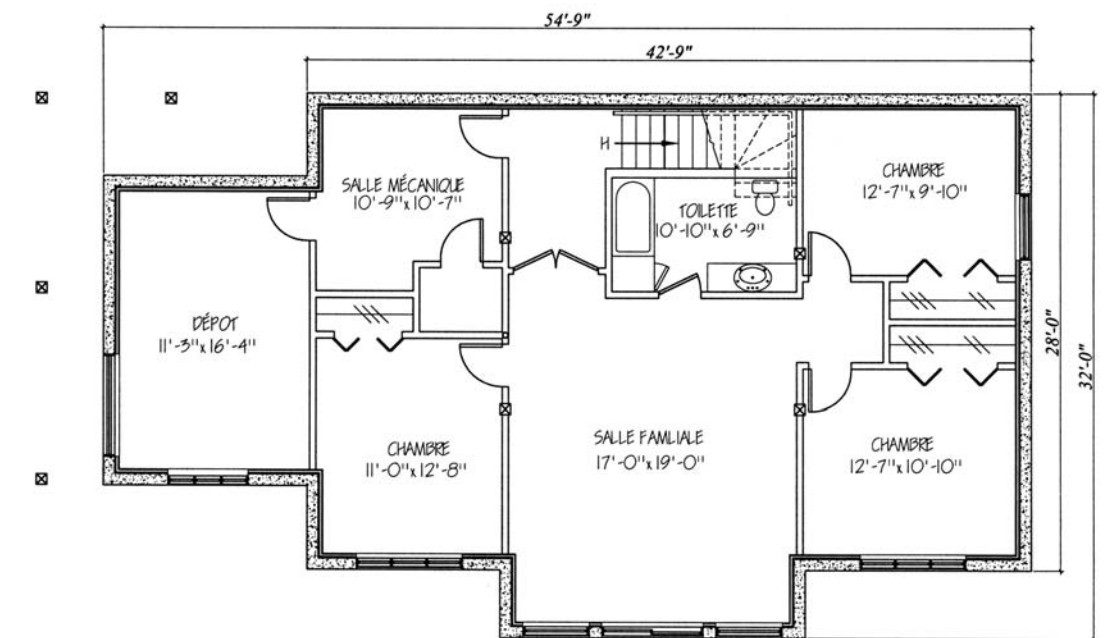
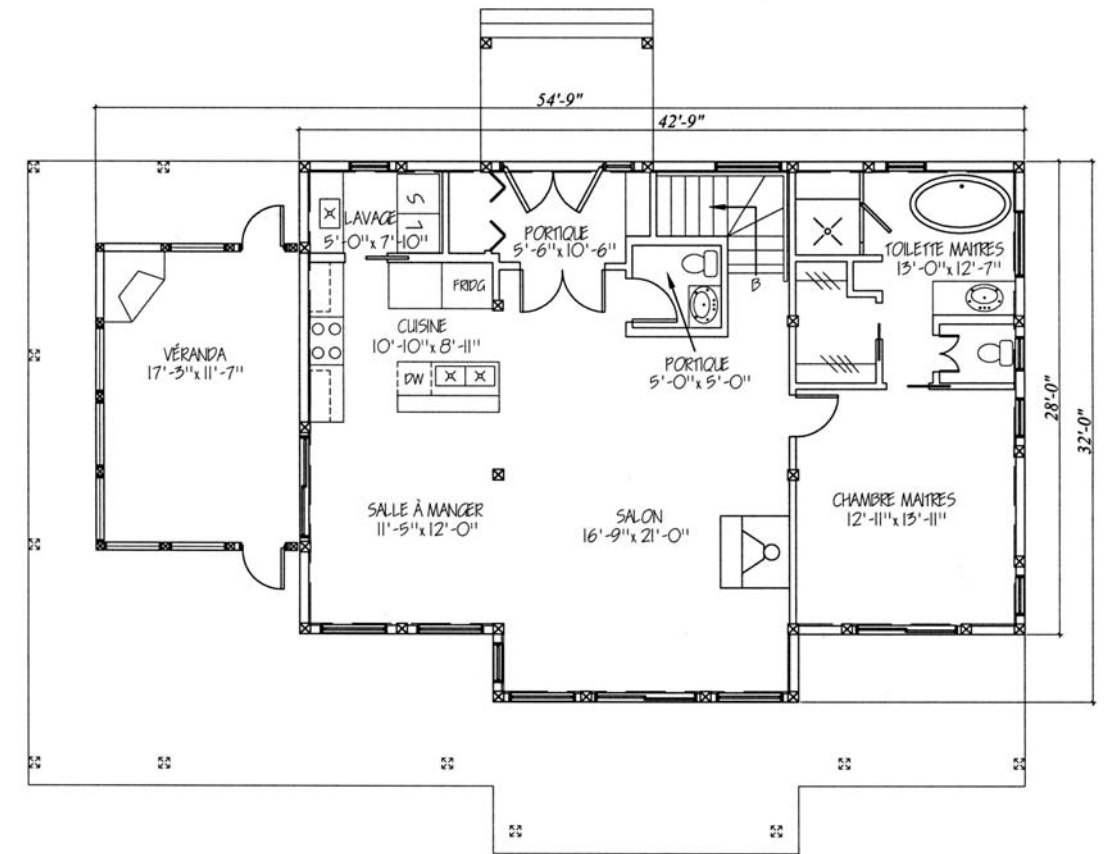
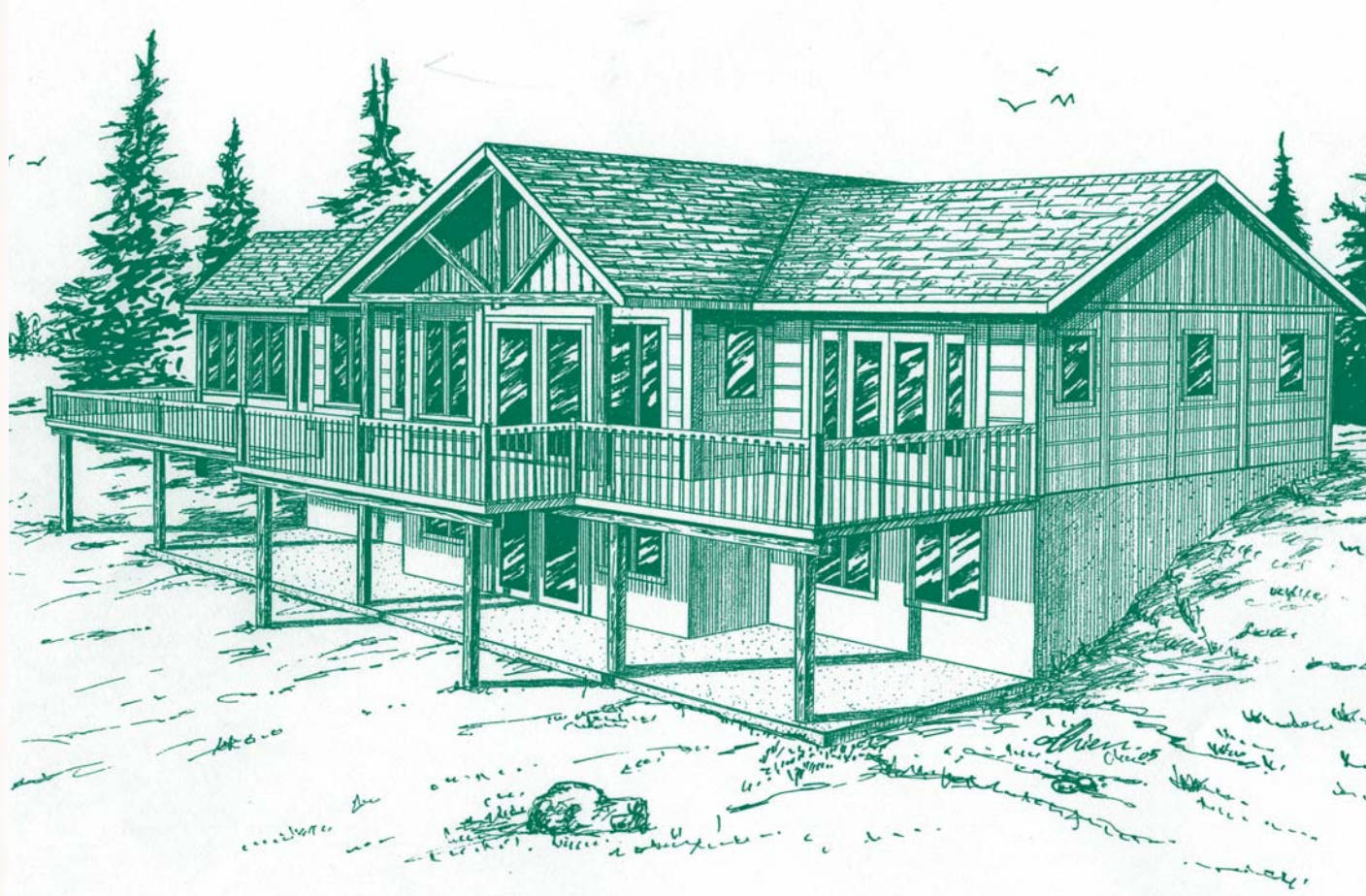


AZUR



Spécifications

- Portique
- Salon
- Cuisine
- Salle à manger
- Véranda
- Salle de lavage
- 3 salles de bain
- 4 chambres à coucher
- Salle mécanique
- Salle familiale
- Dépôt rangement
- Porch
- Living room
- Kitchen
- Dining room
- Veranda
- Laundry room
- 3 bathrooms
- 4 bedrooms
- Mechanical room
- Family room
- Storage room

Surface

Section principale	Main area
30' x 42'	(9.14 m x 12.8 m)
Section adjacente	Adjacent area
18' x 12'	(5.5 m x 3.6 m)
Galerie avant	Front balcony
7' x 8'	(2.1 m x 3.6 m)
Galerie arrière et périphérique	Rear balcony
590 pi ²	(55 m ²)
1^{er} plancher	1 st floor
1 450 pi ²	(135 m ²)
Sous-sol	Basement
1 450 pi ²	(135 m ²)
Total	Total
2 900 pi ²	(270 m ²)
Galerie	Balcony
650 pi ²	(60 m ²)