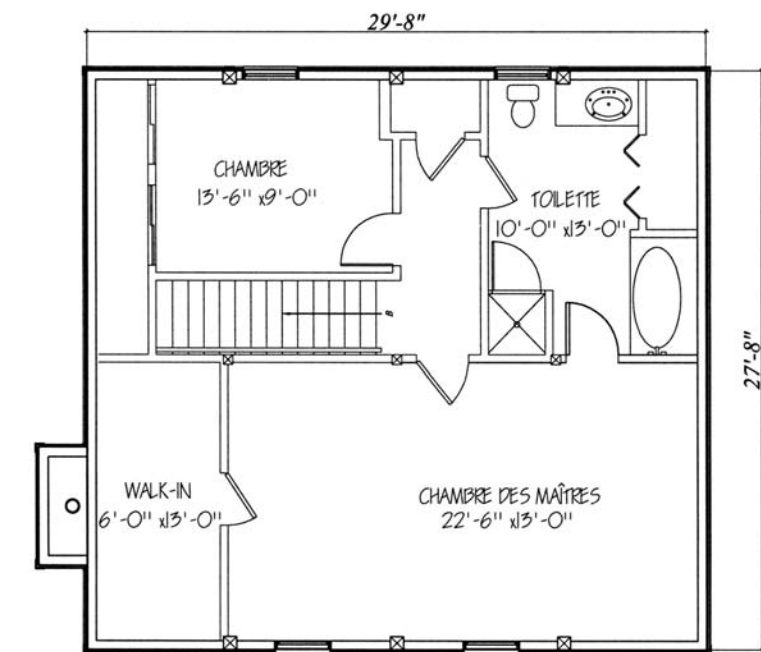
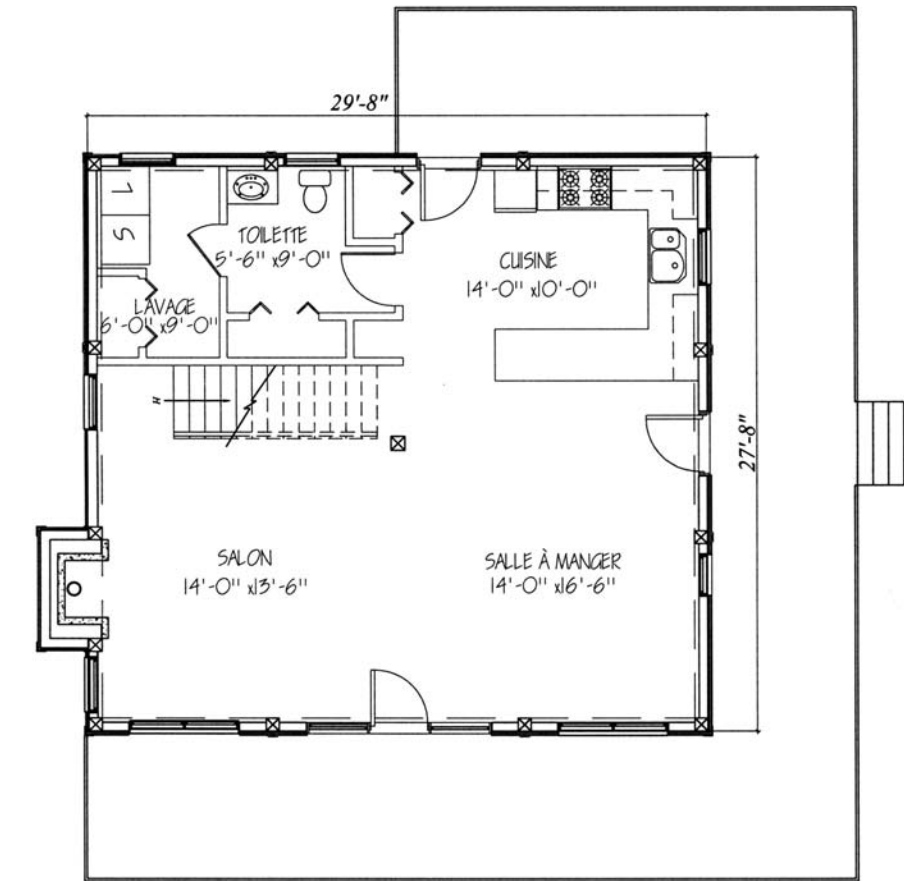


Barkmere



Spécifications

- Cuisine
- Salon
- Salle à manger
- Salle de lavage
- 2 salles de bain
- 2 chambres à coucher

- Kitchen
- Living room
- Dining room
- Laundry room
- 2 bathrooms
- 2 bedrooms

Surface

Section principale	<i>Main area</i>
30' x 28'	(9.1 m x 8.5 m)
Galerie	<i>Balcony</i>
6' sur 2 1/2 faces	(1.5 m)
1^{er} plancher	<i>1st floor</i>
840 pi ²	(78 m ²)
2^{eme} plancher	<i>2nd floor</i>
840 pi ²	(78 m ²)
Total	<i>Total</i>
1 680 pi ²	(156 m ²)
Galerie	<i>Balcony</i>
384 pi ²	(36.5 m ²)