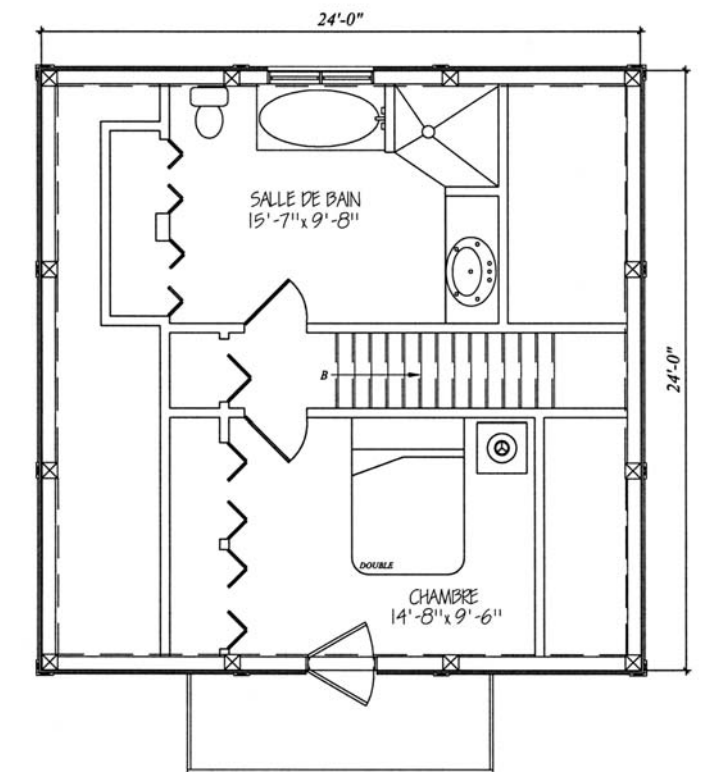
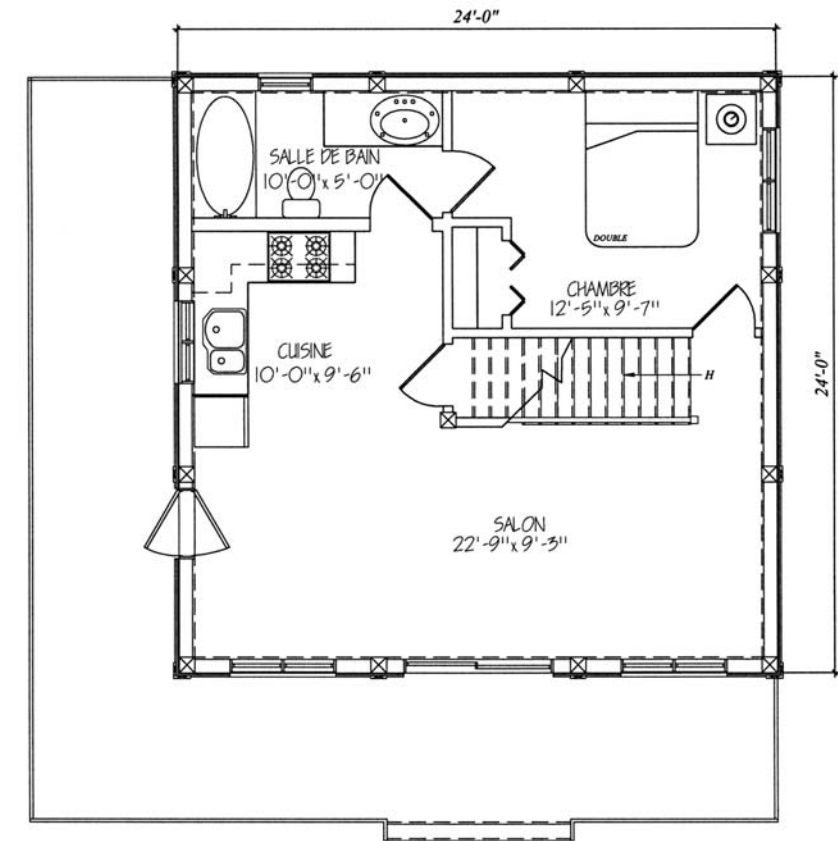
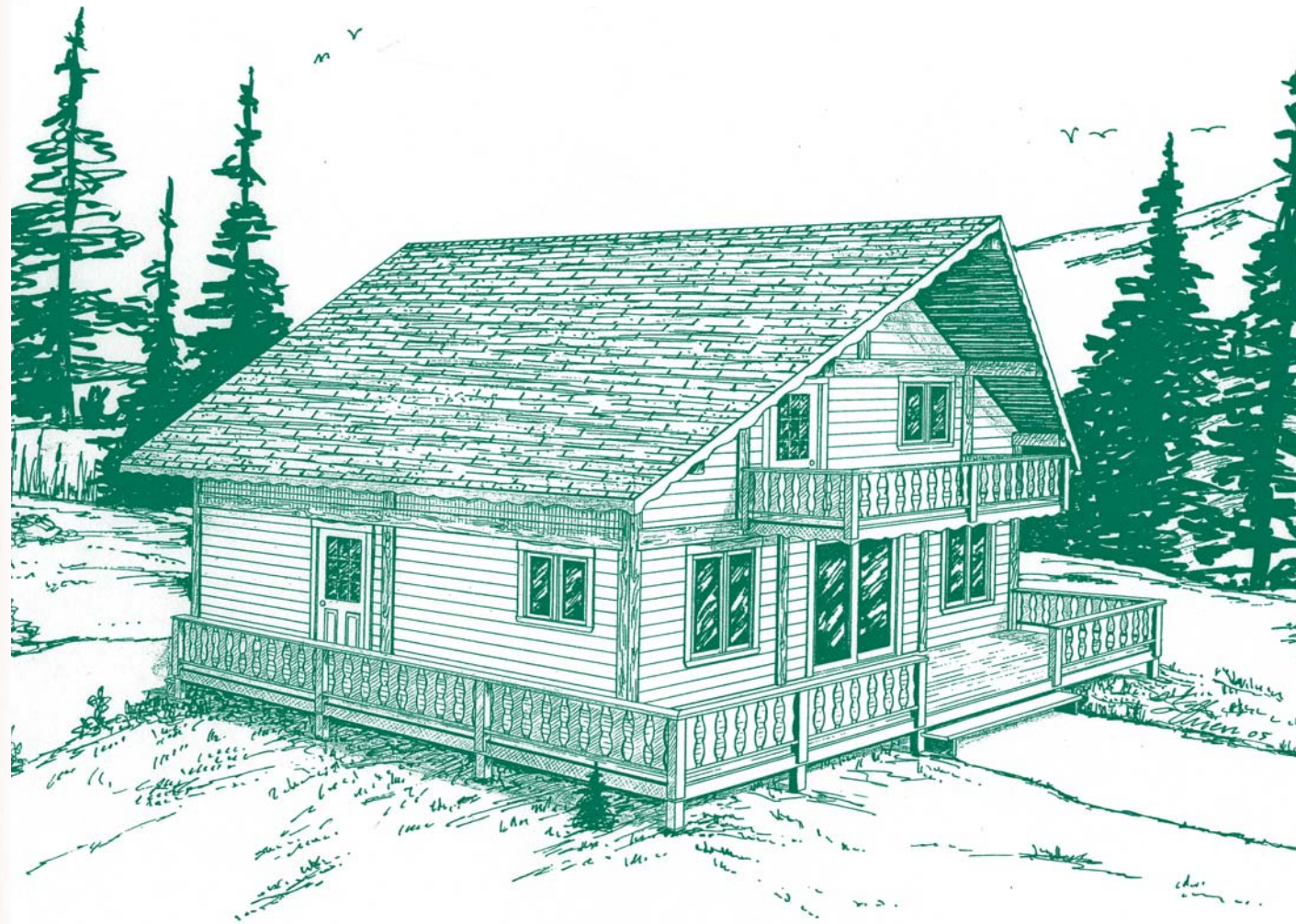


# Briançon



## Spécifications

- Cuisine
- Salon
- Salle à manger
- 2 salles de bain
- 2 chambres à coucher

- Kitchen
- Living room
- Dining room
- 2 bathrooms
- 2 bedrooms

## Surface

<b>Section principale</b>	<i>Main area</i>
24' x 24'	(7.3 m x 7.3 m)
<b>Galerie</b>	<i>Balcony</i>
6' sur 2 faces	(1.8 m)
<b>Galerie étage</b>	<i>2<sup>nd</sup> floor balcony</i>
5' x 12'	(1.5 m x 3.6 m)
<b>1<sup>er</sup> plancher</b>	<i>1<sup>st</sup> floor</i>
576 pi <sup>2</sup>	(53.5 m <sup>2</sup> )
<b>2<sup>eme</sup> plancher</b>	<i>2<sup>nd</sup> floor</i>
576 pi <sup>2</sup>	(53.5 m <sup>2</sup> )
<b>Total</b>	<i>Total</i>
1 152 pi <sup>2</sup>	(107 m <sup>2</sup> )
<b>Galerie</b>	<i>Balcony</i>
384 pi <sup>2</sup>	(35 m <sup>2</sup> )